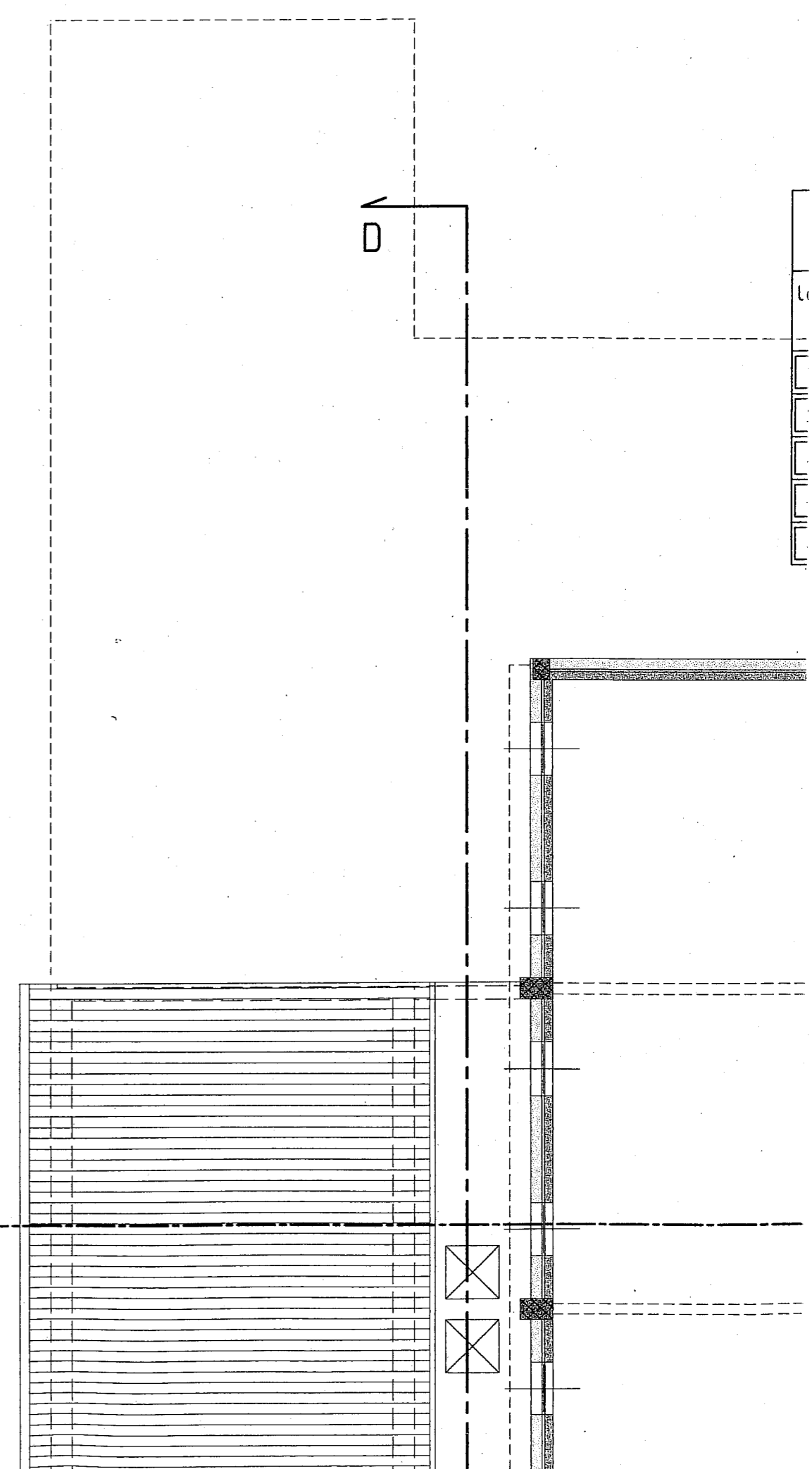
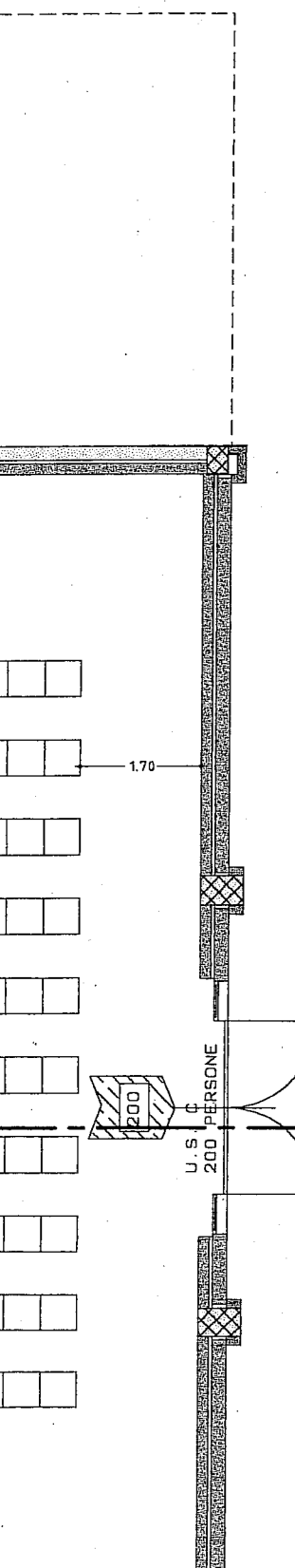


P I A N O T E R R A

locale	destinazione d'uso	mq	mc.	" h "	sup.finestrata mq	rapporto di aero-illuminazione
1	atrio di ingresso	81.04	243.12	3.00	12.21	1/6.6
2	ufficio	11.42	34.26	3.00	1.75	1/6.5
3	attesa amb.medico	16.95	50.85	3.00	2.75	1/6.2
4	bagno ambulatorio	4.32	12.96	3.00	0.62	1/7
5	ambulatorio medico	21.85	65.55	3.00	5.25	1/4.2
6	sala riunioni	68.39	205.17	3.00	8.80	1/7.7
7	wc x disabili	6.24	17.16	2.75	0.44	1/14.2 **
8	locale spogl.disab.	15.47	42.54	2.75	3.36	1/4.6
9.1	locale caldaia	5.00	20.05	4.10*	4.20	1/1.2
9.2	locale raffr.collet.	13.95	50.22	3.60*	4.55	1/3
10	wc pubblico	28.15	105.56	3.75*	5.52	1/5.1
11	loc.macchine ascens.	5.02	11.77	2.34*	0.56	
12 13	spogliatoi palestra	31.23	121.80	3.90*	4.67	1/6.7
14	corridoio palestra	31.33	86.16	2.75	5.20	1/7
15	palestra	204.16	1467.94	7.19*	26.82	1/7.6

* h media

** aereato meccanicamente



rapporto di aero-illuminazione
1/6.6
1/6.5
1/6.2
1/7
1/4.2
1/7.7
1/14.2 **
1/4.6
1/1.2
1/3
1/5.1
1/6.7
1/7
1/7.6

** aereato meccanicamente

D

P I A N O P R I M O						
locale	destinazione d'uso	mq	mc.	" h "	sup.finestrata mq	rapporto di aero-illuminazione
1	connettivo	49.91	164.65	3.30*	24.98	1/2
2	sala	37.48	132.35	3.53*	6.70	1/5.6
3	sala	55.97	200.91	3.59*	6.70	1/8
4	sala	66.12	228.11	3.45*	13.76	1/4.8
5	wc pubblico	13.58	51.60	3.80*	0.44	1/30.8 **

* h media

** aereato meccanicamente

